

CHAPTER

78

EXHAUST

CESSNA®
MODEL 208
ILLUSTRATED PARTS CATALOG

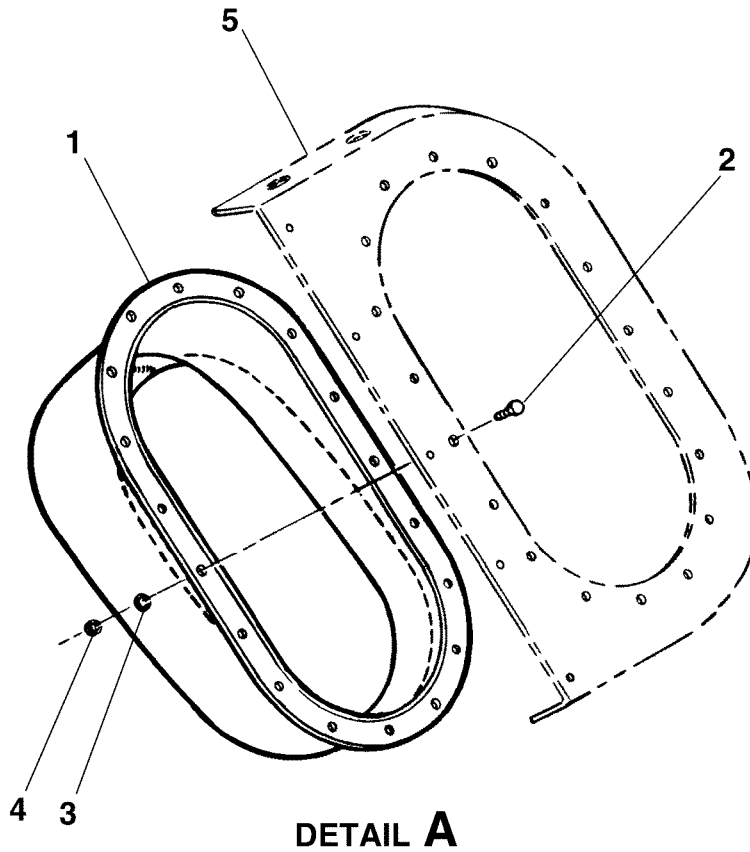
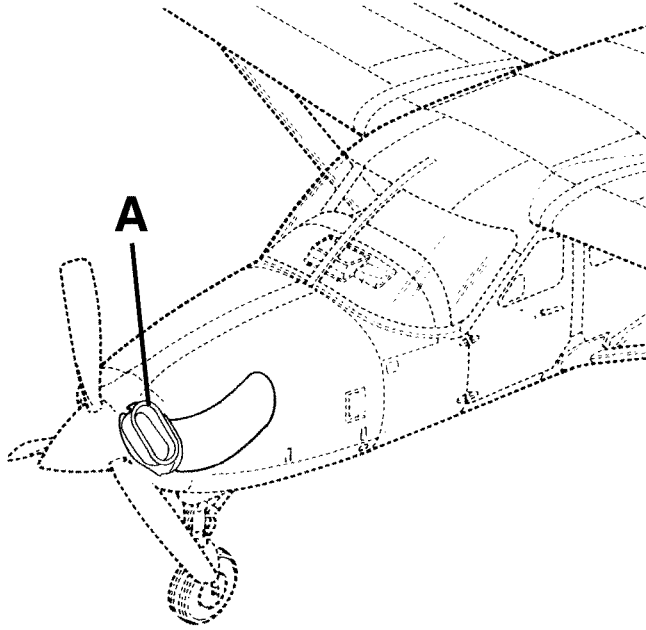
<u>CHAPTER SECTION SUBJECT</u>		<u>NUMBER OF PAGES</u>	<u>DATE</u>
78 - TITLE			
78 - LIST OF EFFECTIVE PAGES			
78 - RECORD OF TEMPORARY REVISIONS			
78 - TABLE OF CONTENTS			
78-10-00	Figure 01	2	Dec 1/2012
78-10-00	Figure 02	2	Mar 1/2019
78-10-00	Figure 03	2	Jun 1/2013
78-10-00	Figure 04	8	Jun 1/2010
78-10-00	Figure 05	2	Mar 1/2015
78-20-00	Figure 01	2	Sep 1/2017

CESSNA®
MODEL 208
 ILLUSTRATED PARTS CATALOG

<u>SUBJECT</u>	<u>CHAPTER SECTION SUBJECT</u>	<u>FIGURE</u>	<u>EFFECTIVITY</u>	
			<u>START</u>	<u>END</u>
PRIMARY EXHAUST DUCT INSTALLATION	78-10-00	01		
ENGINE EXHAUST DUCT INSTALLATION WITHOUT CARGO POD	78-10-00	02	0001 B0001	& ON B4999
ENGINE EXHAUST DUCT INSTALLATION WITH CARGO POD	78-10-00	03	0001	0105
ENGINE EXHAUST DUCT INSTALLATION WITH CARGO POD	78-10-00	04	0106 B0001	& ON & ON
ENGINE EXHAUST DUCT INSTALLATION - CARGO POD FIELD INSTALLATION	78-10-00	05		
EXHAUST DIFFUSER	78-20-00	01		

CESSNA®
MODEL 208
ILLUSTRATED PARTS CATALOG

A24561



DETAIL A
PRIMARY EXHAUST DUCT INSTALLATION
FIGURE 01 (SHEET 1)

26521012
A26521011

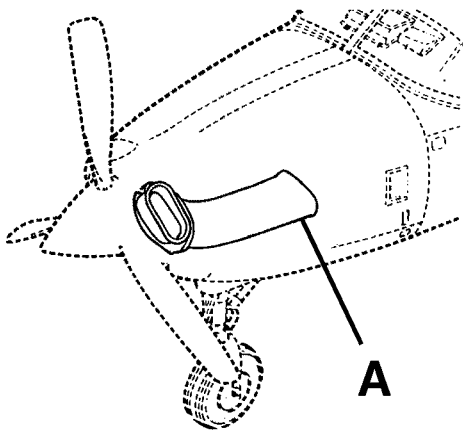
CESSNA®
MODEL 208
 ILLUSTRATED PARTS CATALOG

FIG ITEM	PART NUMBER	NOMENCLATURE	UNITS PER ASSY		
			1	2	3
01		PRIMARY EXHAUST DUCT INSTALLATION			RF
-					
1	2654014-1	. EXHAUST DUCT ASSY-PRIMARY FSO 2654014-16	0001	0006	NP
- 1A	2654014-7	. EXHAUST DUCT ASSY-PRIMARY FSO 2654014-16	0007	0108	NP
			B0001	B0014	
- 1B	2654014-15	. EXHAUST DUCT ASSY-PRIMARY FSO 2654014-16	0109	0374	NP
			B0015	B1049	
- 1C	2654014-16	. EXHAUST DUCT ASSY-PRIMARY REFER TO NOTE 1	0375	& ON	01
			B1050	& ON	
		ATTACHING PARTS			
2	AN4C5A	. BOLT			18
3	NAS1149C0463R	. WASHER			18
4	MS21043-4	. NUT			18
		—*—			
5		. FLANGE ASSY-PRIMARY EXHAUST REFER TO 79-20-00 FIGURE 01 AND REFER TO 79-20-00 FIGURE 02			RF R

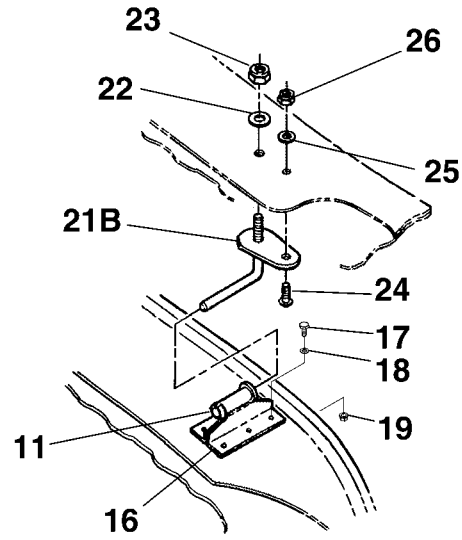
NOTE 1—AIRPLANES -0375 & ON AND -B1050 & ON, AND AIRPLANES -0001 THRU -0374 AND -B0001 THRU -B1049 INCORPORATING CAB04-4.

CESSNA®
MODEL 208
 ILLUSTRATED PARTS CATALOG

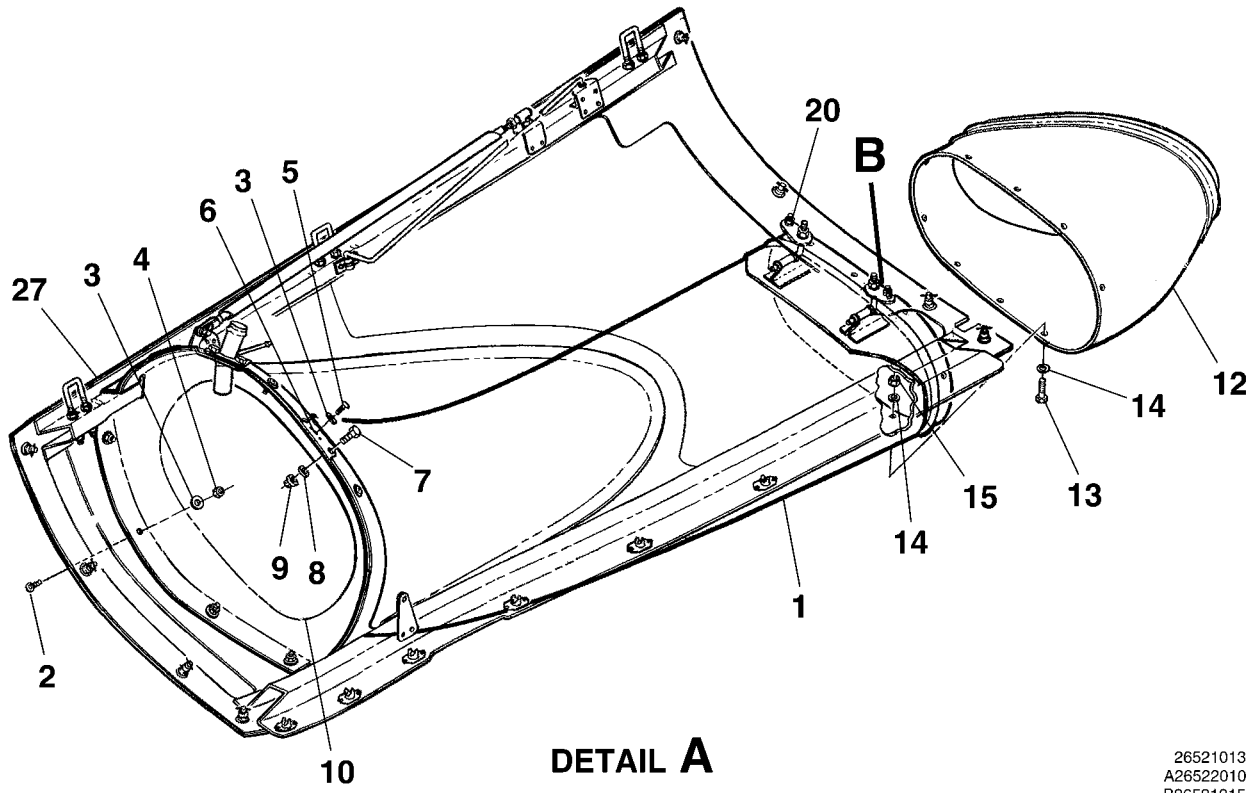
A24564



A



DETAIL B



DETAIL A

ENGINE EXHAUST DUCT INSTALLATION WITHOUT CARGO POD
 FIGURE 02 (SHEET 1)

26521013
 A26522010
 B26521015

**CESSNA®
MODEL 208
ILLUSTRATED PARTS CATALOG**

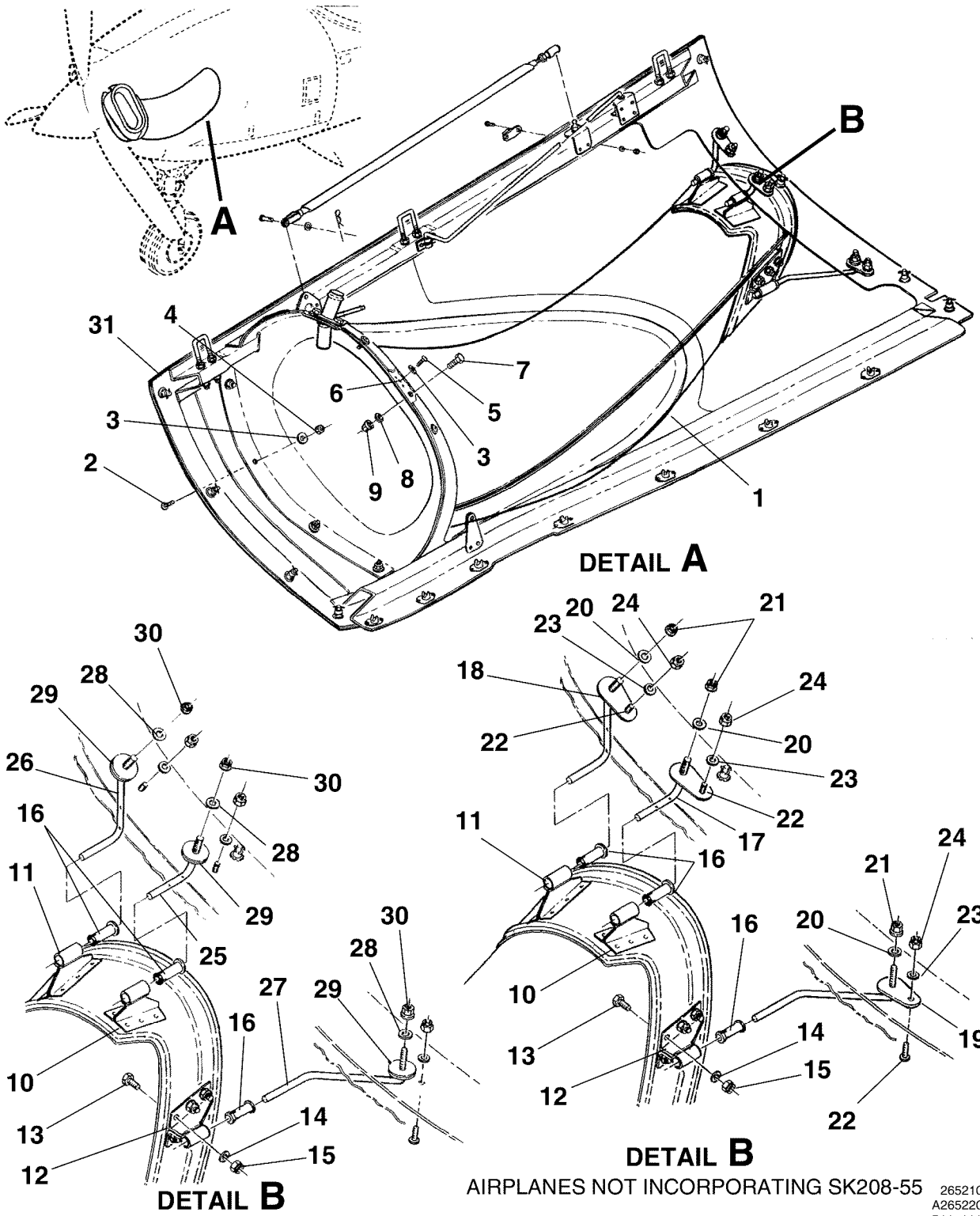
FIG ITEM	PART NUMBER	NOMENCLATURE	UNITS PER ASSY		
			1	2	3
02		ENGINE EXHAUST DUCT INSTALLATION WITHOUT CARGO POD REFER TO	0001	& ON	RF
-		NOTE 1	B0001	B4999	
1	2654008-36	. DUCT ASSY-SECONDARY EXHAUST EJECTOR FSO 2654008-206	0081	0373	NP
			B0180	B1301	
- 1A	2654008-39	. DUCT ASSY-SECONDARY EXHAUST EJECTOR FSO 2654008-206	0374	0606	NP
- 1B	2654008-205	. DUCT ASSY-SECONDARY EXHAUST EJECTOR FSO 2654008-206			NP
- 1C	2654008-43	. DUCT ASSY-SECONDARY EXHAUST EJECTOR FSO 2654008-206	0607	& ON	01
- 1D	2654008-206	. DUCT ASSY-SECONDARY EXHAUST EJECTOR-SPARES			01
		ATTACHING PARTS			
2	MS24693-S271	. SCREW			04
3	S1450-3N10-032C	. WASHER			08
4	MS21042L3	. NUT			04
5	MS35207-262	. SCREW			04
		—*—			
6	NAS686A3K	. NUTPLATE			04
7	AN6-5A	. BOLT			01
8	NAS1149C0663R	. WASHER			01
9	MS21042L6	. NUT			01
10	2654008-35	. BELLMOUTH FSO 2654008-202	0081	0373	NP
			B0180	B1301	
- 10A	2654008-202	. . BELLMOUTH-SPARES USED WITH 2654008-205 AND -206 DUCT ASSY . .			01
- 10B	2654008-38	. . BELLMOUTH	0374	& ON	01
11	2654008-14	. BUSHING-BRACKET			02
12	2654005-1	. DEFLECTOR-EXHAUST			01
		ATTACHING PARTS			
13	AN3-3A	. BOLT	0081	0606	10
			B0180	B1301	
- 13A	AN3C3A	. . BOLT	0607	& ON	10
14	NAS1149F0332P	. . WASHER	0081	0606	20
			B0180	B1301	
- 14A	NAS1149F0332R	. . WASHER	0607	& ON	20
15	MS21045C3	. . NUT	0081	0606	10
			B0180	B1301	
- 15A	MS21043-3	. . NUT	0607	& ON	10
		—*—			
16	2654008-10	. . BRACKET ASSY FSO 2695016-2 REFER TO NOTE 2	0081	0606	02
			B0180	B1301	
- 16A	2695016-2	. . BRACKET ASSY REFER TO NOTE 2	0001	0585	02
			B0001	B1301	
- 16B	2654008-42	. . BRACKET ASSY	0607	& ON	02
		ATTACHING PARTS			
17	AN3C3A	. . BOLT			12
18	NAS620C10L	. . WASHER			12
19	MS21042L3	. . NUT			12
		—*—			
20	2652022-28	. HANGER ASSY-INBD FSO 2652022-133	0001	0323	NP R
			B0001	B0844	
- 20A	2652022-84	. HANGER ASSY-INBD SPARES FSO 2652022-133	0324	0590	NP R
			B0845	& ON	
- 20B	2652022-129	. HANGER ASSY-INBD FSO 2652022-133	0591	0614	NP R
- 20C	2652022-133	. HANGER ASSY-INBD	0615	& ON	01 R
- 21	2652022-29	. HANGER ASSY-OUTBD FSO 2652022-134	0001	0323	NP R
			B0001	B0844	
- 21A	2652022-85	. HANGER ASSY-OUTBD SPARES FSO 2652022-134	0324	0590	NP R
			B0845	& ON	
21B	2652022-130	. HANGER ASSY-OUTBD FSO 2652022-134	0591	0614	NP R
- 21C	2652022-134	. HANGER ASSY-OUTBD	0615	& ON	01 R
		ATTACHING PARTS			
22	NAS1149F0463P	. WASHER			01
23	MS21042L4	. NUT			01
24	MS35207-263	. SCREW			01
25	NAS1149F0363P	. WASHER			01
26	MS20364-1032C	. NUT			01
		—*—			
27		. LOWER COWL INSTALLATION REFER TO 71-10-00 FIGURE 02			RF

NOTE 1—WHEN ORDERING REPLACEMENT PARTS, VERIFY DUCT CONFIGURATION. IF STC HAS BEEN PERFORMED, CONTACT STC HOLDER/MANUFACTURER IF DIFFERENCE IS NOTED.

NOTE 2—AIRPLANES 0081 THRU 0606 AND B0180 THRU B1301 AND AIRPLANES 0001 THRU 0585 AND B0001 THRU B1301 INCORPORATING CAB-78-02

CESSNA®
MODEL 208
 ILLUSTRATED PARTS CATALOG

A24566



AIRPLANES INCORPORATING SK208-555

AIRPLANES NOT INCORPORATING SK208-55

26521012
 A26522001
 B26522006
 B26522006A

ENGINE EXHAUST DUCT INSTALLATION WITH CARGO POD
 FIGURE 03 (SHEET 1)

CESSNA®
MODEL 208
 ILLUSTRATED PARTS CATALOG

FIG ITEM	PART NUMBER	NOMENCLATURE	UNITS PER ASSY		
			1	2	3
03		ENGINE EXHAUST DUCT INSTALLATION WITH CARGO POD REFER TO NOTE	0001	0105	RF
-		1 AND REFER TO NOTE 3			
1	2654018-18	. DUCT ASSY-SECONDARY EXHAUST EJECTOR FSO 2654030-210			NP
- 1A	2654030-200	. DUCT ASSY-SECONDARY EXHAUST EJECTOR FSO 2654030-210 REFER TO NOTE 2			NP
- 1B	2654030-210	. DUCT ASSY-SECONDARY EXHAUST EJECTOR REFER TO NOTE 2 ATTACHING PARTS			01
2	MS24693-S271	. SCREW			04
3	S1450-3N10-032C	. WASHER			08
4	MS21042L3	. NUT			04
5	MS35207-262	. SCREW			04
		—*—			
6	NAS686A3K	. . NUTPLATE			04
7	AN6-5A	. BOLT			01
8	NAS1149C0663R	. WASHER			01
9	MS21042L6	. NUT			01
10	2654018-7	. BRACKET ASSY-CENTER			01
11	2654018-28	. BRACKET ASSY-OUTBD			01
12	2654020-1	. BRACKET ASSY-INBD ATTACHING PARTS			01
13	AN3C3A	. BOLT			06
14	NAS1149C0332R	. WASHER			06 R
15	MS21043-3	. NUT			06
		—*—			
16	2654008-14	. BUSHING-BRACKET			03
17		. HANGER ASSY-CENTER FSO SK208-55			RF
18		. HANGER ASSY-OUTBD FSO SK208-55			RF
19		. HANGER ASSY-INBD FSO SK208-55 ATTACHING PARTS			RF
20	NAS1149F0463P	. WASHER			01
21	MS21042L4	. NUT			01
22	MS35207-262	. SCREW			01
23	NAS1149F0363P	. WASHER			01
24	MS20364-1032C	. NUT			01
		—*—			
25	2654025-5	. HANGER ASSY-CENTER			01
26	2654025-3	. HANGER ASSY-OUTBD			01
27	2654025-7	. HANGER ASSY-INBD ATTACHING PARTS			01
28	S1450-4-12-063	. WASHER			01
29	AN970-4	. WASHER			AR
30	MS21042L4	. NUT			01
		—*—			
31		. LOWER COWL INSTALLATION REFER TO 71-10-00 FIGURE 02			RF

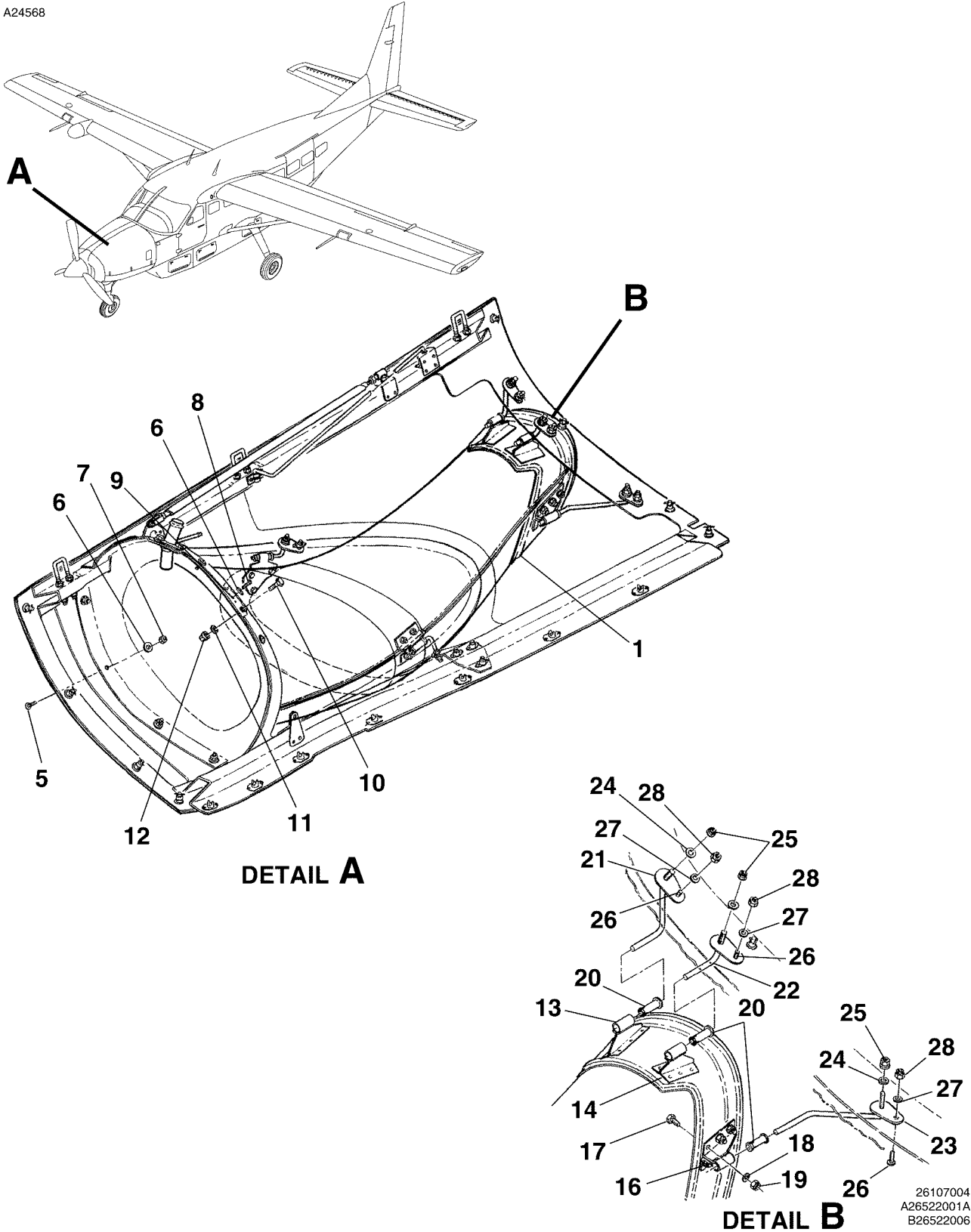
NOTE 1—AIRPLANES -0001 THRU -0105 NOT INCORPORATING SK208-23.

NOTE 2—WHEN REPLACING A FLAT SECONDARY EJECTOR WITH A TWISTED SECONDARY EJECTOR, AIRPLANES -0001 THRU -0260 AND -B0001 THRU -B0597 ORDER SK208-129.

NOTE 3—WHEN ORDERING REPLACEMENT PARTS, VERIFY DUCT CONFIGURATION. IF STC HAS BEEN PERFORMED, CONTACT STC HOLDER/MANUFACTURER IF A DIFFERENCE IS NOTED.

CESSNA®
MODEL 208
ILLUSTRATED PARTS CATALOG

A24568



ENGINE EXHAUST DUCT INSTALLATION WITH CARGO POD
FIGURE 04 (SHEET 1)

CESSNA®
MODEL 208
ILLUSTRATED PARTS CATALOG

FIG ITEM	PART NUMBER	NOMENCLATURE	UNITS PER ASSY		
			1	2	3
04		ENGINE EXHAUST DUCT INSTALLATION WITH CARGO POD REFER TO NOTE 1 AND NOTE 4	0106	& ON	RF
-			B0001	& ON	
1	2654018-24	. EJECTOR DUCT ASSY-SECONDARY EXHAUST REFER TO NOTE 1 FSO 2654030-210	0106	0124	NP
			B0001	B0038	
- 2	2654018-39	. EJECTOR DUCT ASSY-SECONDARY EXHAUST FSO 2654030-210	0125	0169	NP
			B0039	B0198	
- 3	2654018-42	. EJECTOR DUCT ASSY-SECONDARY EXHAUST FSO 2654030-210	0170	0199	NP
			B0199	B0249	
- 4	2654018-43	. EJECTOR DUCT ASSY-SECONDARY EXHAUST FSO 2654030-210	0200	0260	NP
			B0250	B0597	
- 4A	2654018-51	. EJECTOR DUCT ASSY-SECONDARY EXHAUST FSO 2654030-210	0261	0328	NP
			B0598	B0839	
- 4B	2654030-1	. EJECTOR DUCT ASSY-SECONDARY EXHAUST FSO 2654030-210	0329	0373	NP
			B0840	B1048	
- 4C	2654030-19	. EJECTOR DUCT ASSY-SECONDARY EXHAUST	0374	& ON	01
			B1049	& ON	
- 4D	2654030-200	. DUCT ASSY-SECONDARY EXHAUST EJECTOR REFER TO NOTE 3 FSO 2654030-210	0106	& ON	01
			B0001	& ON	
- 4E	2654030-210	. DUCT ASSY-SECONDARY EXHAUST EJECTOR REFER TO NOTE 3			01
		ATTACHING PARTS			
5	MS24693-S271	. SCREW			04
6	S1450-3N10-032C	. WASHER			08
7	MS21042L3	. NUT			04
8	MS35207-262	. SCREW			04
		—*—			
9	NAS686A3K	. NUTPLATE			04
10	AN5-5A	. BOLT			01
11	NAS1149C0663R	. WASHER			01
12	MS21042L6	. NUT			01
13	2654018-28	. BRACKET WELD ASSY-OUTBD	0106	0260	01
			B0001	B0597	
14	2654018-27	. BRACKET WELD ASSY-CENTER	0106	0124	01
			B0001	B0038	
- 15	2654018-33	. BRACKET WELD ASSY-CENTER	0125	0260	01
			B0039	B0597	
16	2654020-1	. BRACKET ASSY-INBD			01
		ATTACHING PARTS			
17	AN3C3A	. BOLT			06
18	NAS1149C0332R	. WASHER			06
19	MS21043-3	. NUT			06
20	2654008-14	. EXHAUST BRACKET BUSHING			03
		—*—			
21		. HANGER ASSY-OUTBD FSO SK208-55 REFER TO NOTE 2	0106	0130	RF
			B0001	B0088	
22		. HANGER ASSY-CENTER FSO SK208-55 REFER TO NOTE 2	0106	0130	RF
			B0001	B0088	
23		. HANGER ASSY-INBD FSO SK208-55 REFER TO NOTE 2	0106	0130	RF
			B0001	B0088	
24	NAS1149F0463P	. WASHER-HANGER ATTACH REFER TO NOTE 2	0106	0130	01
			B0001	B0088	
25	MS21042L4	. NUT HANGER REFER TO NOTE 2	0106	0130	01
			B0001	B0088	
26	MS35207-262	. SCREW-HANGER REFER TO NOTE 2	0106	0130	01
			B0001	B0088	
27	NAS1149F0363P	. WASHER-HANGER REFER TO NOTE 2	0106	0130	01
			B0001	B0088	
28	MS20364-1032C	. NUT-HANGER REFER TO NOTE 2	0106	0130	01
			B0001	B0088	

NOTE 1—AIRPLANES -0001 THRU -0105 INCORPORATING SK208-23.

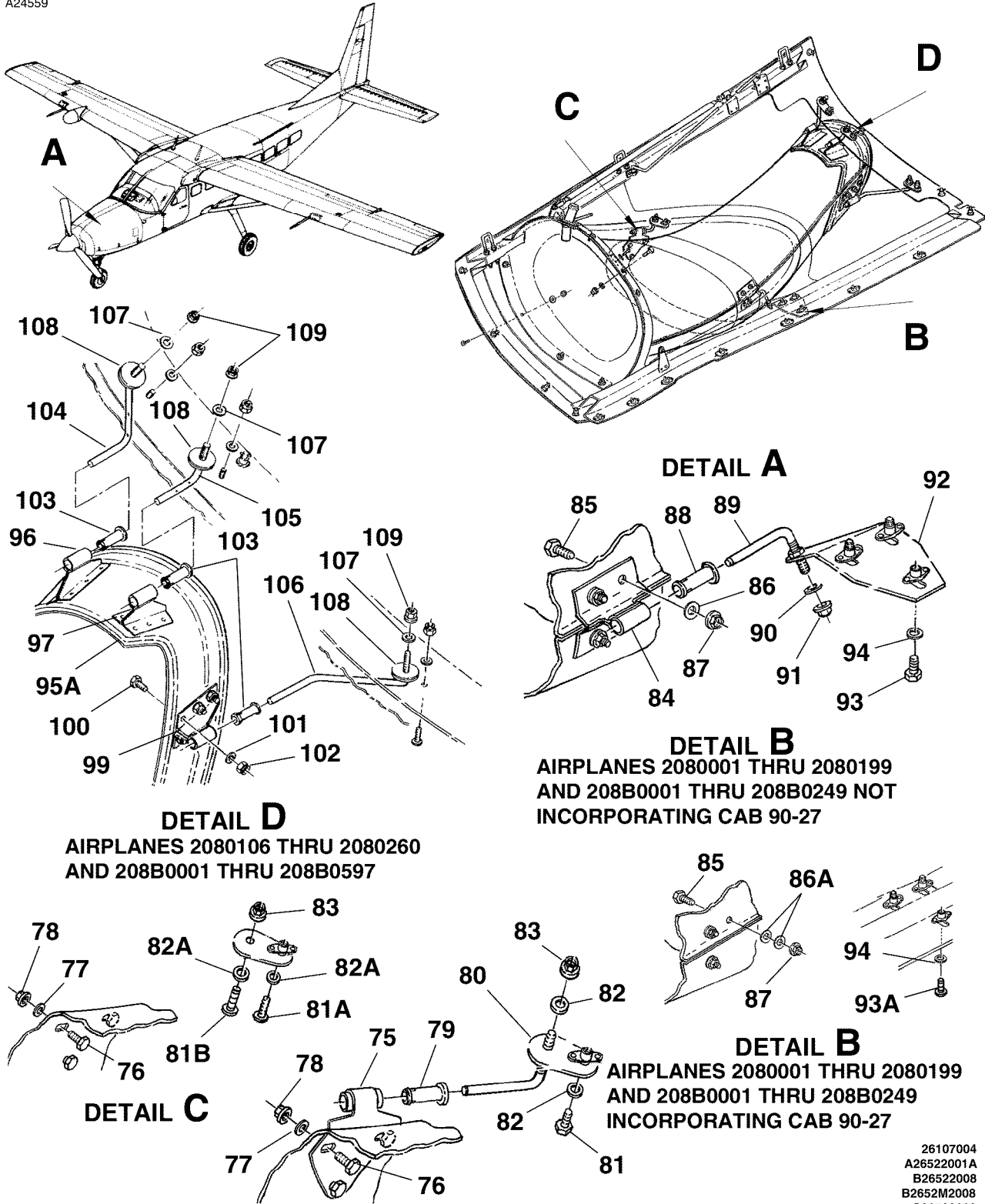
NOTE 2—AIRPLANES -0106 THRU -0130 AND -B0001 THRU -B0088 NOT INCORPORATING SK208-55.

NOTE 3—WHEN ORDERING 2654030-200, ORDER ATTACHING HANGERS AND BRACKETS PER AIRPLANE SERIAL AS FOLLOW: FOR AIRPLANES -0001 THRU -0260 AND -B0001 THRU -B0597, ORDER SK208-129, AND AIRPLANES -0261 THRU -0315 AND -B0598 THRU -B0799 ORDER SK208-139.

NOTE 4—WHEN ORDERING REPLACEMENT PARTS, VERIFY DUCT CONFIGURATION. IF STC HAS BEEN PERFORMED, CONTACT STC HOLDER/MANUFACTURER IF A DIFFERENCE IS NOTED.

CESSNA®
MODEL 208
 ILLUSTRATED PARTS CATALOG

A24559



DETAIL D

AIRPLANES 2080106 THRU 2080260
 AND 208B0001 THRU 208B0597

DETAIL A

DETAIL B
 AIRPLANES 2080001 THRU 2080199
 AND 208B0001 THRU 208B0249 NOT
 INCORPORATING CAB 90-27

DETAIL B

AIRPLANES 2080001 THRU 2080199
 AND 208B0001 THRU 208B0249
 INCORPORATING CAB 90-27

DETAIL C
 ENGINE EXHAUST DUCT INSTALLATION WITH CARGO POD
 FIGURE 04 (SHEET 2)

- 26107004
- A26522001A
- B26522008
- B2652M2008
- C26522008
- C2652M2008
- D26522006A

CESSNA®
MODEL 208
ILLUSTRATED PARTS CATALOG

FIG ITEM	PART NUMBER	NOMENCLATURE	UNITS PER ASSY		
			1	2	3
04					
75	2654022-7	. BRACKET ASSY REFER TO NOTE 1	0106	0199	01
		ATTACHING PARTS	B0001	B0249	
76	AN3C3A	. BOLT REFER TO NOTE 1 AND NOTE 2			03
77	NAS1149C0332R	. WASHER REFER TO NOTE 1 AND NOTE 2			03
78	MS21043-3	. NUT REFER TO NOTE 1 AND NOTE 2			03
		—*—			
79	2654008-14	. . EXHAUST BRACKET BUSHING REFER TO NOTE 1			01
80	2654022-5	. HANGER ASSY REFER TO NOTE 1	0106	0199	01
		ATTACHING PARTS	B0001	B0249	
81	AN3C4A	. BOLT REFER TO NOTE 1			01
81A	MS35207-263	. SCREW REFER TO NOTE 2			01
81B	MS35207-280	. SCREW REFER TO NOTE 2			01
82	NAS1149F0363P	. WASHER REFER TO NOTE 1			02
82A	NAS1149F0363P	. WASHER REFER TO NOTE 2			01
83	MS21042-4	. NUT REFER TO NOTE 1 AND NOTE 2			01
		—*—			
84	2654023-1	. BRACKET ASSY REFER TO NOTE 1	0106	0199	01
		ATTACHING PARTS	B0001	B0249	
85	AN3C3A	. BOLT-REFER TO NOTE 1 AND NOTE 2			04
86	NAS1149C0332R	. WASHER-REFER TO NOTE 1			04
86A	NAS1149C0332R	. WASHER REFER TO NOTE 2			08
87	MS21043-3	. NUT REFER TO NOTE 1 AND NOTE 2			04
		—*—			
88	2654008-14	. . EXHAUST BRACKET BUSHING REFER TO NOTE 1			01
89	2654022-4	. HANGER REFER TO NOTE 1	0106	0199	01
			B0001	B0249	
90	NAS1149F0463P	. WASHER-BRACKET ATTACH REFER TO NOTE 1			01
91	MS21043-4	. NUT-BRACKET ATTACH REFER TO NOTE 1			01
92	2654021-1	. BRACKET-INBD REFER TO NOTE 1	0106	0199	01
			B0001	B0249	
93	AN4-3A	. BOLT-BRACKET ATTACH REFER TO NOTE 1			03
93A	MS35207-280	. SCREW-BRACKET ATTACH REFER TO NOTE 2			03
94	NAS1149F0463P	. WASHER-BRACKET ATTACH REFER TO NOTE 1 & NOTE 2			03
- 95		. LOWER COWLING INSTALLATION REFER TO 71-10-00 FIGURE 02			RF
95A		. DUCT ASSY-SECONDARY EXHAUST EJECTOR REFER TO SHEET 1	0106	0260	RF
			B0001	B0597	
96	2654018-28	. . BRACKET WELD ASSY-OUTBD			01
97	2654018-27	. . BRACKET WELD ASSY-CENTER	0106	0124	01
			B0001	B0038	
- 98	2654018-33	. . BRKT WELD ASSY-INBD-CENTER	0125	0260	01
			B0039	B0597	
99	2654020-1	. . BRACKET ASSY-INBD			01
100	AN3C3A	. . BOLT-BRACKET ATTACH			06
101	NAS1149C0332R	. . WASHER-BRACKET ATTACH			06
102	MS21043-3	. . NUT-BRACKET ATTACH			06
103	2654008-14	. . EXHAUST BRACKET BUSHING			03
104	2654025-3	. HANGER ASSY-OUTBD REFER TO NOTE 3	0131	0260	01
			B0089	B0597	
105	2654025-5	. HANGER ASSY-MID REFER TO NOTE 3	0131	0260	01
			B0089	B0597	
106	2654025-7	. HANGER ASSY-INBD REFER TO NOTE 3	0131	0260	01
			B0089	B0597	
107	S1450-4-12-063	. WASHER REFER TO NOTE 3	0131	0260	AR
			B0089	B0597	
108	AN970-4	. WASHER REFER TO NOTE 3	0131	0260	AR
			B0089	B0597	
109	MS21042L4	. NUT REFER TO NOTE 2	0131	0260	AR
			B0089	B0597	

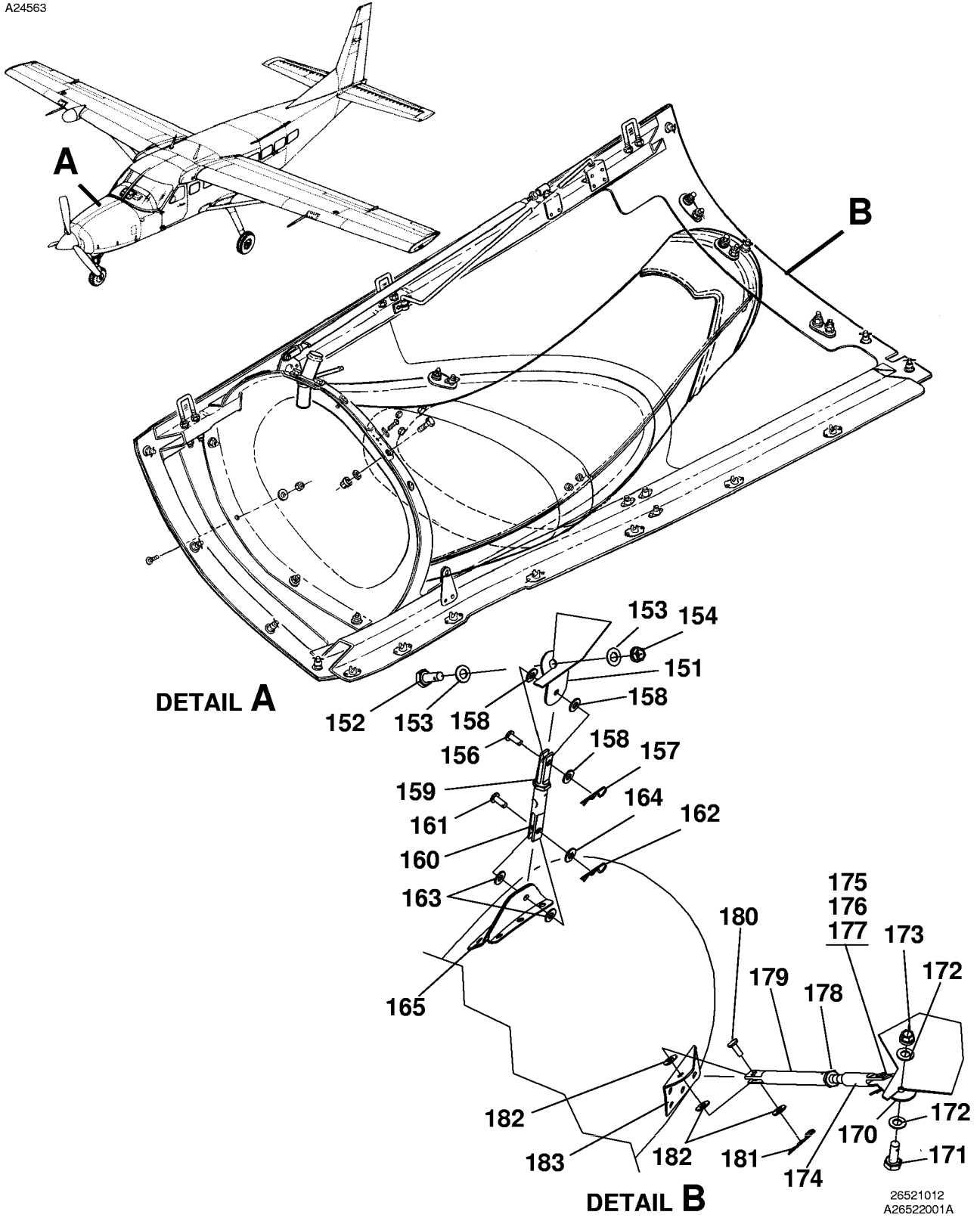
NOTE 1—AIRPLANES -0001 THRU -0197 AND -B0001 THRU -B0235 NOT INCORPORATING CAB90-27.

NOTE 2—AIRPLANES -0001 THRU -0197 AND -B0001 THRU -B0235 INCORPORATING CAB90-27.

NOTE 3—AIRPLANES -0131 AND ON AND -B0089 AND ON, AND AIRPLANES -0106 THRU -0130 AND -B0001 THRU -B0088 INCORPORATING SK208-55.

CESSNA®
MODEL 208
ILLUSTRATED PARTS CATALOG

A24563



26521012
A26522001A
B2652T1022

ENGINE EXHAUST DUCT INSTALLATION WITH CARGO POD
FIGURE 04 (SHEET 3)

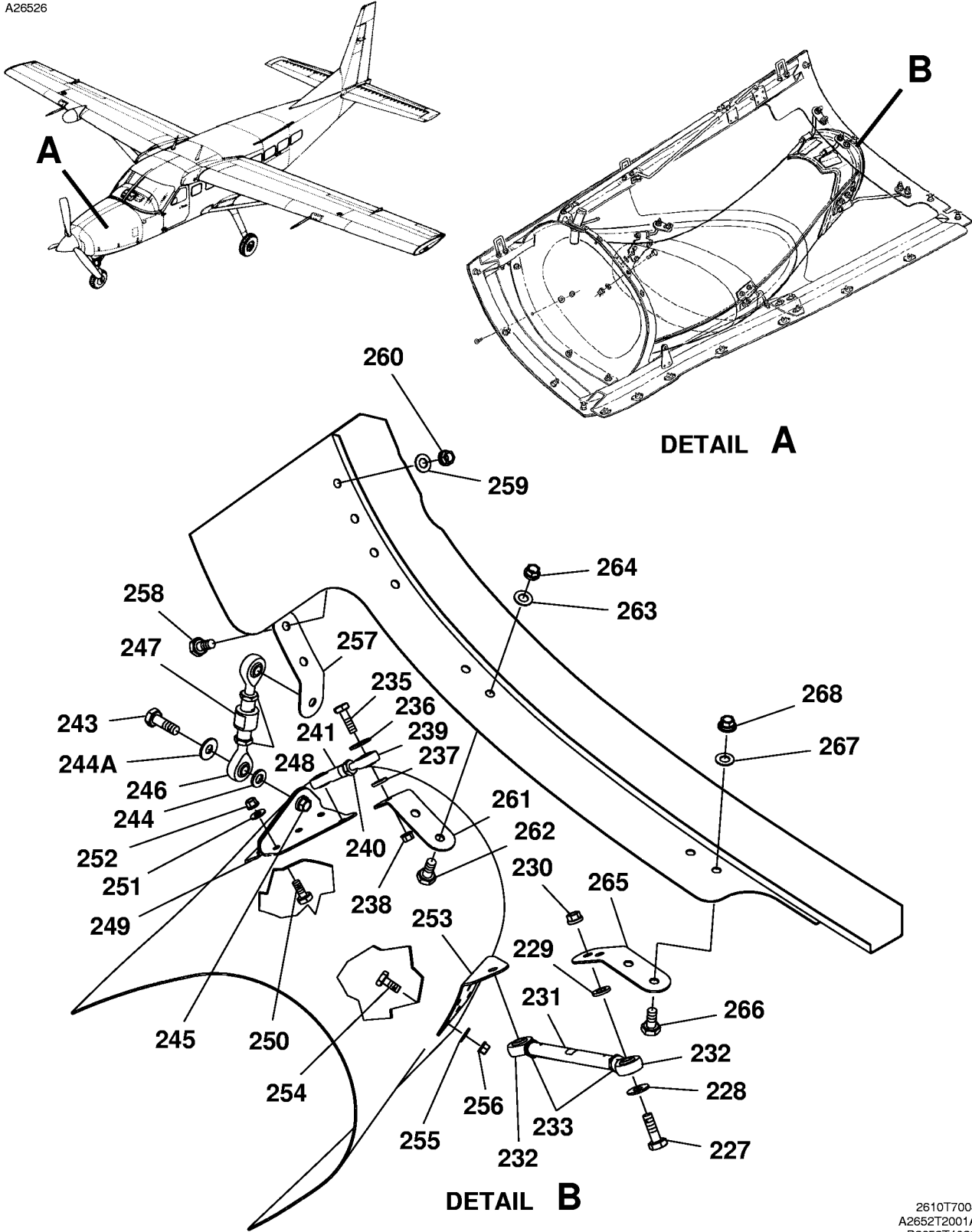
CESSNA®
MODEL 208
ILLUSTRATED PARTS CATALOG

FIG ITEM	PART NUMBER	NOMENCLATURE	UNITS PER ASSY		
			1	2	3
04					
- 150		SUPPORTS-EJECTOR DUCT HANGER REFER TO NOTE 1	0261	0328	RF
			B0598	B0839	
- 150A	2654028-3	INBD HANGER ASSY			01
151	2654028-4	BRACKET-INBD			01
		ATTACHING PARTS			
152	AN4C5A	BOLT			01
153	NAS1149C0432R	WASHER			02
154	MS21042L4	NUT			01
		—*—			
- 155	2654028-7	CLEVIS			01
		ATTACHING PARTS			
156	MS20392-2R11	PIN			01
157	AN415-4	PIN			01
158	NAS1149C0332R	WASHER			03
		—*—			
159	AN316C4R	NUT			01
160	2654028-8	CLEVIS			01
		ATTACHING PARTS			
161	MS20392-2R11	PIN			01
162	AN415-4	PIN			01
163	NAS1149C0316R	WASHER			02
164	NAS1149C0332R	WASHER			01
		—*—			
165	2654018-62	BRACKET WELD ASSY			01
		ATTACHING PARTS			
- 166	AN3C3A	BOLT			06
- 167	NAS1149C0332R	WASHER			06
- 168	MS21043-3	NUT			06
		—*—			
- 169	2654028-2	OUTBD HANGER ASSY			01
170	2654028-4	BRACKET			01
		ATTACHING PARTS			
171	AN4C5A	BOLT			01
172	NAS1149C0432R	WASHER			02
173	MS21042L4	NUT			01
		—*—			
174	2654028-5	CLEVIS			01
		ATTACHING PARTS			
175	MS20392-2R11	PIN			01
176	AN415-4	PIN			01
177	NAS1149C0332R	WASHER			03
		—*—			
178	AN316C4R	NUT			01
179	2654028-6	CLEVIS			01
		ATTACHING PARTS			
180	MS20392-2R11	PIN			01
181	AN415-4	PIN			01
182	NAS1149C0332R	WASHER			03
		—*—			
183	2654018-55	BRACKET			01
		ATTACHING PARTS			
- 184	AN3C3A	BOLT			06
- 185	NAS1149C0332R	WASHER			06
- 186	MS21043-3	NUT			06
		—*—			

NOTE 1—WHEN INITIALLY REPLACING THESE PARTS, ORDER SK208-139.

CESSNA®
MODEL 208
ILLUSTRATED PARTS CATALOG

A26526



ENGINE EXHAUST DUCT INSTALLATION WITH CARGO POD
FIGURE 04 (SHEET 4)

2610T7004
A2652T2001A
B2652T1023

CESSNA®
MODEL 208
ILLUSTRATED PARTS CATALOG

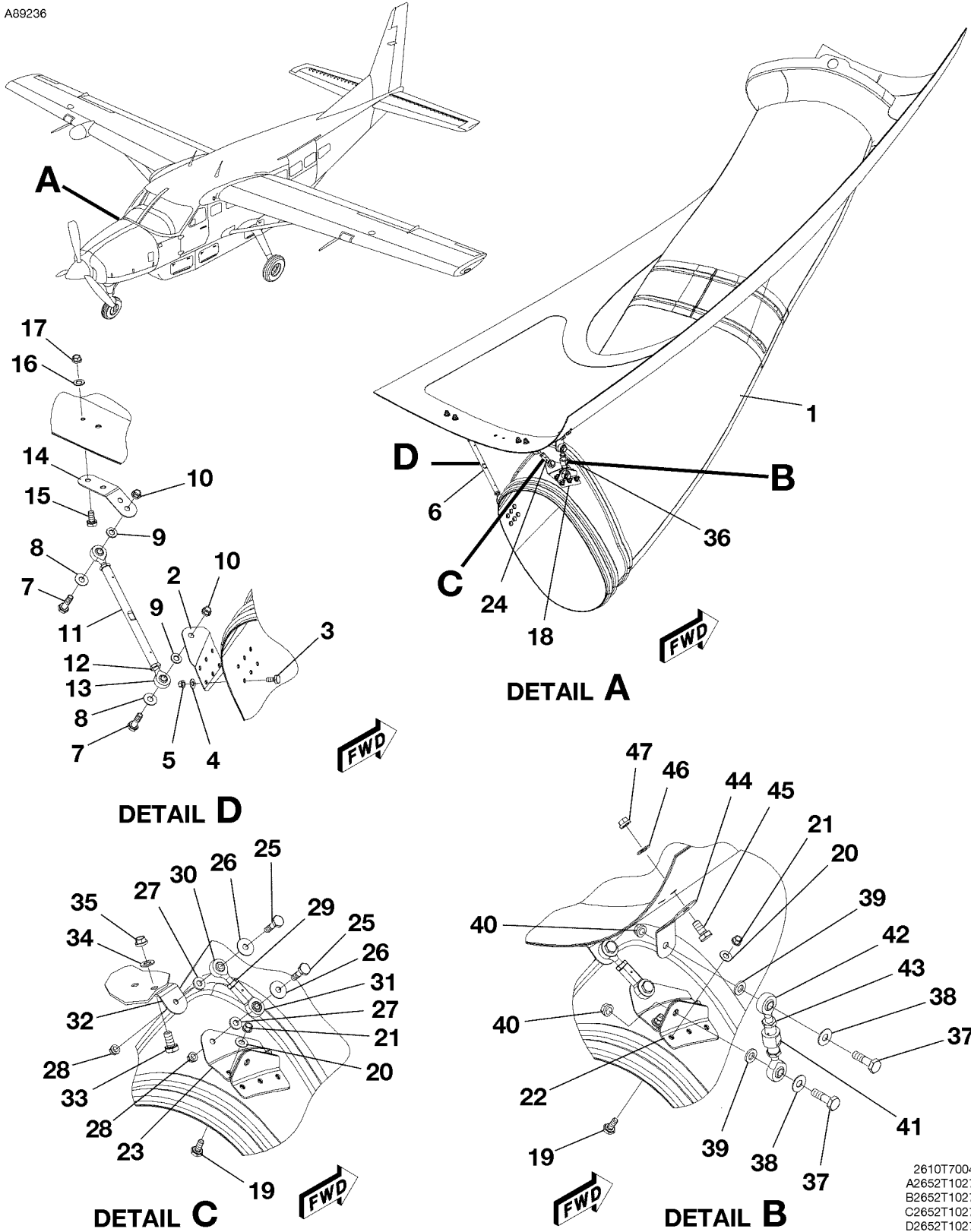
FIG ITEM	PART NUMBER	NOMENCLATURE	UNITS PER ASSY							
			1	2	3	4	5	6	7	
04										
- 225		SUPPORTS-EJECTOR DUCT HANGER REFER TO NOTE 1						0329	& ON	RF
								B0840	& ON	
- 226	2654029-4	HANGER ASSY-INBD								01
		ATTACHING PARTS								
227	AN4C7A	BOLT								02
228	S1450-4S10-032	WASHER								02
229	NAS1149C0463R	WASHER								02
230	MS21043-4	NUT								02
		—*—								
231	2654029-14	ROD-BEARING								01
232	S1105-4	BEARING								02
- 232A	MM-4M-43	BEARING ALT FOR S1105-4								02
233	AN316C4R	NUT								02
- 234	2654029-3	HANGER ASSY-CENTER								01
		ATTACHING PARTS								
235	AN3C6A	BOLT								02
236	S1450-3S10-032	WASHER								02
237	NAS1149C0363R	WASHER								02
238	MS21043-3	NUT								02
		—*—								
239	S1105-3	BEARING								01
- 239A	MM-3M-38	BEARING ALT FOR S1105-3								01 R
240	AN315C3R	NUT								01
241	S1104-3	BEARING								01
- 241A	MW-3M-53	BEARING ALT FOR S1104-3								01
- 242	2654029-2	HANGER ASSY-OUTBD								01
		ATTACHING PARTS								
243	AN4C7A	BOLT								02
244	NAS1149C0463R	WASHER								02
244A	S1450-4S10-032	WASHER								02
245	MS21043-4	NUT								02
		—*—								
246	2654029-10	END-ROD								02
247	2654029-11	THREADED SLEEVE								01
248	AN316C4R	NUT								02
249	2654029-5	BRACKET ASSY-EJECTOR DUCT ATTACH								01
		ATTACHING PARTS								
250	AN3C3A	BOLT								06
251	NAS1149C0332R	WASHER								06
252	MS21043-3	NUT								06
		—*—								
253	2654029-6	BRACKET-EJECTOR DUCT ATTACH REFER TO NOTE 2								01
		ATTACHING PARTS								
254	AN3C3A	BOLT								06
255	NAS1149C0332R	WASHER								06
256	MS21043-3	NUT								06
		—*—								
257	2654029-7	BRACKET-COWL ATTACH								01
		ATTACHING PARTS								
258	AN4C4A	BOLT								02
259	NAS1149C0432R	WASHER								02
260	MS21042L4	NUT								02
		—*—								
261	2654029-8	BRACKET-COWL ATTACH								01
		ATTACHING PARTS								
262	AN4C4A	BOLT								02
263	NAS1149C0432R	WASHER								02
264	MS21042L4	NUT								02
		—*—								
265	2654029-15	BRACKET-COWL ATTACH								01
		ATTACHING PARTS								
266	AN4C4A	BOLT								02
267	NAS1149C0432R	WASHER								02
268	MS21042L4	NUT								02
		—*—								

NOTE 1—AIRPLANES -0329 & ON AND -B0840 & ON, AND AIRPLANES -0001 THRU -0260 AND -B0001 THRU -B0597 INCORPORATING SK208-129 AND AIRPLANES -0261 THRU -0315 AND -B0598 THRU -B0799 INCORPORATING SK208-139A.

NOTE 2—AIRPLANES -0329 & ON AND -B0840 & ON NOT INCORPORATING SK208-129 OR SK208-139A.

CESSNA®
MODEL 208
 ILLUSTRATED PARTS CATALOG

A89236



ENGINE EXHAUST DUCT INSTALLATION - CARGO POD FIELD INSTALLATION
 FIGURE 05 (SHEET 1)

2610T7004
 A2652T1027
 B2652T1027
 C2652T1027
 D2652T1027

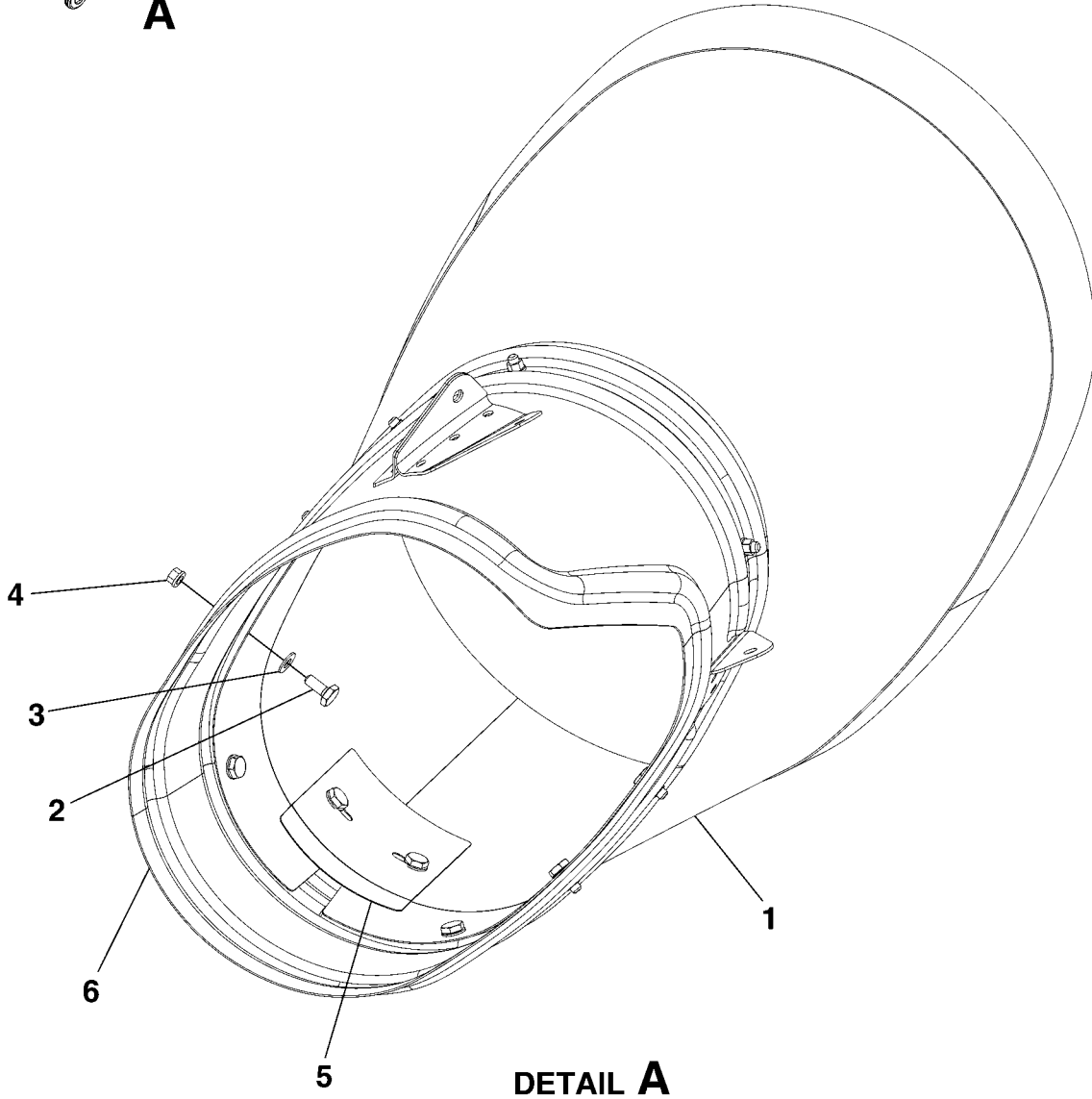
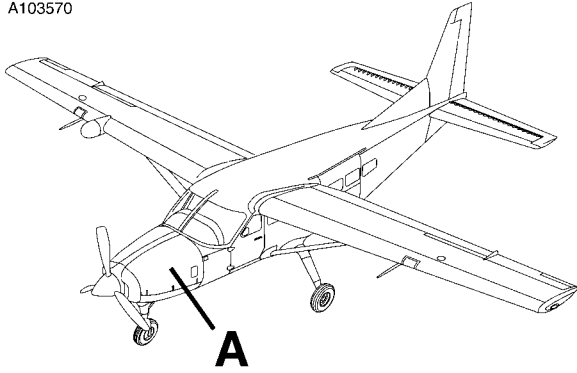
CESSNA®
MODEL 208
ILLUSTRATED PARTS CATALOG

FIG ITEM	PART NUMBER	NOMENCLATURE	UNITS
			PER ASSY
		1 2 3 4 5 6 7	
05		ENGINE EXHAUST DUCT INSTALLATION - CARGO POD FIELD INSTALLATION	RF
-			
1	2654030-211	. WELDMENT ASSY	01
2	2654029-6	. BRACKET	01
		ATTACHING PARTS	
3	AN3C3A	. BOLT	06
4	NAS1149C0332R	. WASHER	06
5	MS21043-3	. NUT	06
- 5A	NAS1291C3	. NUT-ALT FOR MS21043-3	06
		—*—	
6	2654029-19	. HANGER ASSEMBLY-INBOARD	01
		ATTACHING PARTS	
7	AN4C7A	. BOLT	02
8	S1450-4S10-032	. WASHER	02
9	NAS1149C0463R	. WASHER	02
10	MS21043-4	. NUT	02
- 10A	NAS1291C4	. NUT-ALT FOR MS21043-4	02
		—*—	
11	2654029-14	. BEARING ROD	01
12	AN316C4R	. NUT	02
13	MM-4M-43	. BEARING ALT FOR S1105-4	02 R
14	2654029-15	. BRACKET	01
		ATTACHING PARTS	
15	AN4C4A	. BOLT	02
16	NAS1149C0432R	. WASHER	02
17	MS21042L4	. NUT	02
		—*—	
18	2654029-5	. BRACKET ASSY	01
		ATTACHING PARTS	
19	AN3C3A	. BOLT	06
20	NAS1149C0332R	. WASHER	06
21	MS21043-3	. NUT	06
- 21A	NAS1291C3	. NUT-ALT FOR MS21043-3	06
		—*—	
22	2654029-12	. BRACKET	01
23	2654029-13	. BRACKET	01
24	2654029-18	. HANGER ASSY-CENTER	01
		ATTACHING PARTS	
25	AN3C6A	. BOLT	02
26	S1450-3S10-032	. WASHER	02
27	NAS1149C0363R	. WASHER	02
28	MS21043-3	. NUT	02
- 28A	NAS1291C3	. NUT-ALT FOR MS21043-3	02
29	AN315C3R	. NUT	01
		—*—	
30	MM-3M-38	. BEARING ALT FOR S1105-3	01 R
31	MW-3M-53	. BEARING ALT FOR S1104-3	01 R
32	2654029-8	. BRACKET	01
		ATTACHING PARTS	
33	AN4C4A	. BOLT	02
34	NAS1149C0332R	. WASHER	02
35	MS21042L4	. NUT	02
		—*—	
36	2654029-17	. HANGER ASSY-OUTBD	02
		ATTACHING PARTS	
37	AN4C7A	. BOLT	02
38	S1450-4S10-032	. WASHER	02
39	NAS1149C0463R	. WASHER	02
40	MS21043-4	. NUT	02
- 40A	NAS1291C4	. NUT-ALT FOR MS21043-4	02
		—*—	
41	2654029-11	. THREADED SLEEVE	01
42	AN316C4R	. NUT	01
43	2654029-20	. ROD END SPL	02
44	2654029-7	. BRACKET	01
		ATTACHING PARTS	
45	AN4C4A	. BOLT	02 R
46	NAS1149C0432R	. WASHER	02
47	MS21042L4	. NUT	02
		—*—	

- ITEM NOT ILLUSTRATED

CESSNA®
MODEL 208
ILLUSTRATED PARTS CATALOG

A103570



EXHAUST DIFFUSER
FIGURE 01 (SHEET 1)

2610T7002

CESSNA®
MODEL 208
 ILLUSTRATED PARTS CATALOG

FIG ITEM	PART NUMBER	NOMENCLATURE							UNITS PER ASSY
		1	2	3	4	5	6	7	
01		EXHAUST DIFFUSER - SECONDARY EJECTOR DUCT							RF
-		. WELD ASSY-EXHAUST DIFFUSER							01
		. ATTACHING PARTS							
1	2654050-15	. BOLT							11
2	AN3C3A	. WASHER							11
3	NAS1149C0332R	. NUT-EQU FOR NAS1291C3							11
4	MS21043-3	. NUT-EQU FOR MS21043-3							11
- 4A	NAS1291C3							
								
5	2654050-14	. CLOSEOUT							01
6		. SECONDARY EJECTOR DUCT ASSY REFER TO 78-10-00 FIGURE 03, FIGURE 04, AND FIGURE 05							RF

- ITEM NOT ILLUSTRATED